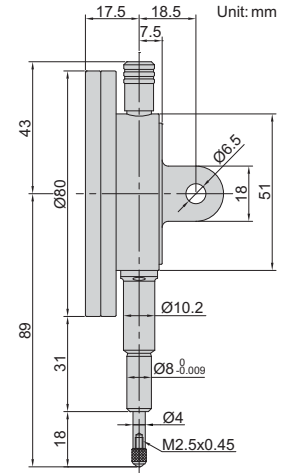


# LARGE DIAL FACE DIAL INDICATOR



**2888-10**

- Large, easy-to-read dial face
- With limit pointers
- Optional accessory: backs (page 132), contact points (page 128~131)



Code	Range	Graduation	Accuracy	Hysteresis	Range/rev	Dial reading	Remark
<b>2888-10*</b>	10mm	0.01mm	17µm	5µm	1mm	0-100	flat back, with spare lug back

\* Supplied with manufacturer calibration certificate