



Designed to meet or exceed general professional needs, the Dino-Lite 5MP Edge AM7115MZT delivers unsurpassed image at wide magnification range from 20X to 220X with greatest illumination flexibility. Integrated with cutting-edge optics, advanced 5MP sensor, and low-loss MJPEG compression, the AM7115MZT allows displaying incredibly crisp and fluent image with low power consumption. The innovative Flexible LED Control (FLC) enables partial illumination to enhance edge contrast and provides intensity adjustability for better adaptability. Together with adjustable polarizer, interchangeable front caps, rugged metal housing, the AM7115MZT is made to be the tool of choice for wide range of applications.

Overview



High optical resolution

The superior optics adopted in the Edge series reveals the finest details, answering the needs of the most demanding microscopy applications.



5.0 Megapixels

Thanks to the low loss MJPEG compression, the advanced CMOS image sensor allows to transmit fluid and crisp image with resolution up to 2592x1944.



Flexible LED Control (FLC)

Tasking with software, the FLC maximizes illumination flexibility by offering independent on/off control to the four LED quadrants in addition to the 6-levels intensity adjustment capability.



Adjustable polarizer

The built-in adjustable polarizer allows to freely remove the unwanted reflection or glare from the object surface for a better contrast.



Scroll Lock

The scroll lock ensures the focus knob staying at the desired focus or magnification position without worry of unintentional movement.



Robust housing

The metal housing made of aluminum alloy offers compelling advantages of protection and endurance.



Interchangeable caps

The interchangeable caps provide adaptability to numerous applications with alternative lighting or object interface, such as but not limited to diffused-light, ring-light, and coaxial-light etc.

Interchangeable front caps



N3C-C / Close Cap

This cap protects the lens and LED lights from contamination of dust, debris, or moisture.



N3C-D / Diffuser Cap

This cap diffuses the LED light.



N3C-D2 / Opal Diffuser Cap

This cap diffuses the LED light.



N3C-E / Extended Open Cap

Dino-Lite Edge (stand type) will focus at approximately 200x when the cap touches surface.



N3C-L / Long Cap

This cap is useful to adjust the working focus of Dino-Lite Edge at lower magnification.



N3C-O / Open Cap

This is the standard cap for normal usage.



N3C-S / Sidelight Cap

This cap creates images with more depth and texture.

Information about working distance and field of view

M	WD	FOV (x)	FOV (y)	DOF
20	60.2	19.5	14.6	2.5
30	33.5	13	9.7	1.8
40	20.9	9.8	7.3	1.5
50	13.9	7.8	5.8	
60	9.7	6.5	4.8	
70	7.1	5.6	4.2	1.0
80	5.5	4.9	3.6	
90	4.5	4.3	3.2	
100	4.1	3.9	2.9	
110	4.0	3.6	2.7	
120	4.1	3.3	2.4	
130	4.5	3.0	2.2	
140	5.0	2.8	2.1	
150	5.6	2.6	1.9	
160	6.3	2.4	1.8	
170	7.1	2.3	1.7	
180	8.0	2.2	1.6	
190	8.9	2.1	1.5	
200	9.9	2.0	1.5	
210	10.9	1.9	1.4	
220	11.9	1.8	1.3	0.1

M = magnification rate WD = working distance (without front cap) FOV = field of view DOF = depth of field Unit = mm

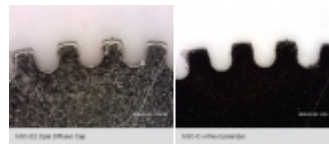
Gallery



PCB



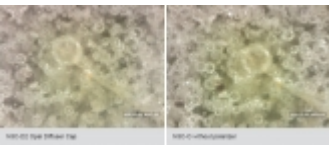
Watch



Gear



IC



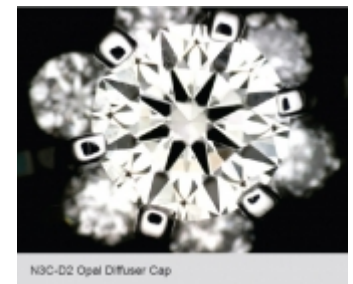
Juware



Thin section microscope slide of rock and fossil



Slide of Hair Follicle



Diamond

