

AM4515ZTL



Also work with Accessory - N3C-R (Ring Light Cap)

The Dino-Lite AM4515ZTL Edge series handheld microscope features improved optics for sharper images, an adjustable polarizing filter, Long Working Distance (LWD) and Automatic Magnification Reading (AMR) for easy measurement. With these features, this model is suitable for a wide range of applications including the repair and assembly of highly reflective or translucent materials, with examples such as soldering, quality inspection, or jewelry fabrication.

The specialized software bundled with this product (DinoCapture 2.0) allows users to calibrate the microscope, capture & annotate images, measure image features, and record video. With the Automatic Magnification Reading (AMR) feature, measuring image features becomes as easy as point-and-click. Users are not bothered with manually reading and entering the magnification into the software before every measurement, which increases efficiency and reduces the potential for human error.

This model also features a scroll lock on the magnification dial to secure the dial and fix the focus and magnification, which can be helpful to prevent unintentional rotations of the dial. Other standard features include the MicroTouch shutter button for quick and convenient picture taking and eight high-intensity white LEDs that fully illuminate the viewing subject. For applications that require transmitted polarizing illumination, such as optical mineralogy, we recommend purchasing the Dino-Lite BL-ZW1 backlight pad as an added accessory.

Overview



High quality optics

This Dino-Lite Edge series microscope maximizes observed details with state-of-the-art lens design and super sharp resolving power.



PC Compatible

This Dino-Lite Edge series microscope connects to the USB 2.0 port on any compatible Windows PC. Once connected, users can easily record, manage, and share their observations using our proprietary software (DinoCapture 2.0). This software is provided free of charge to customers and features professional measurement tools with calibration.



Automatic Magnification Reading (AMR)

With this feature built into the microscope, our proprietary software will automatically detect and display the magnification readings in real-time, and store the magnification within each captured image. This feature improves the accuracy and precision of these readings while also increasing overall efficiency.



Largest magnification range with long working distance

The wide magnification range (10x to 140x) is achieved with working distances greater than 29 mm (without front cap), which can be helpful when clearance is required between the microscope and the viewing object.



MicroTouch shutter button

Take picture-perfect photos quickly and conveniently with the MicroTouch shutter button. This small, round, touch-sensitive button responds to the lightest touch to avoid blurry photos caused by excessive movement of the microscope. The MicroTouch shutter button can also be configured to control video recording, trigger barcode scanning, or switch on/off the LED lights.



Adaptable cap design

This model features a detachable and interchangeable front cap that extends its range of use, as different caps are available for various applications. Removing the front cap provides greater working distance and access to the full magnification range.



Adjustable polarizer

This model includes a rotatable polarized light filter (polarizer) that is useful for suppressing glare from reflective materials, such as metals, plastics, or glass. For applications that require transmitted polarizing illumination, such as optical mineralogy, we recommend purchasing the Dino-Lite BL-ZW1 backlight pad as an added accessory.

Specification

Model : AM4515ZTL Dino-Lite Edge

Interface : USB 2.0

Product Resolution : 1.3M pixels (SXGA)

Magnification Rate : 10x~140x

Sensor : Color CMOS

Frame Rate : Up to 30fps

-Save Formats :

+Image:

DinoCapture2.0: BMP, GIF, PNG, MNG, TIF, TGA, PCX, WBMP, JP2, JPC, JPG, PGX, RAS, PNM

+Movie:

DinoCapture2.0: WMV, FLV, SWF

Microtouch : Touch sensitive trigger on the microscope for taking pictures

Measurement Function : Yes

Calibration Function : Yes

Operating System Supported : Windows 10, 8, 7, Vista, XP; Mac OS 10.9 or later

Unit Weight : 100g

Unit Dimension : 10.5cm (H) x 3.2cm (D)

Package Dimensions : 16cm (L) x 16cm (W) x 6cm (H)

Interchangeable Front Caps



N3C-D / Diffuser Cap

This cap diffuses the LED light.



N3C-D2 / Opal Diffuser Cap
This cap diffuses the LED light.



N3C-E / Extended Open Cap
Dino-Lite Edge (stand type) will focus at approximately 200x when the cap touches surface.



N3C-L / Long Cap
This cap is useful to adjust the working focus of Dino-Lite Edge at lower magnification.



N3C-O / Open Cap
This is the standard cap for normal usage.



N3C-S / Sidelight Cap
This cap creates images with more depth and texture.



N3C-C / Close Cap
This cap protects the lens and LED lights from contamination of dust, debris, or moisture.

Information about working distance and field of view

M	WD	FOV (x)	FOV (y)	DOF
10	234.5	39.0	31.2	12
20	112.5	19.5	15.6	4.5
30	72.5	13.0	10.4	3.1
40	54.5	9.8	7.8	1.8
50	43.5	7.8	6.2	1.2
60	37.5	6.5	5.2	0.9
70	33.7	5.6	4.5	0.6
80	31.3	4.9	3.9	0.5
90	29.9	4.3	3.5	0.37
100	29.2	3.9	3.1	0.28
110	29.1	3.5	2.8	0.22
120	29.3	3.3	2.6	0.17
130	29.8	3.0	2.4	0.12
140	30.5	2.8	2.2	0.09

M = magnification rate WD = working distance (without front cap) FOV = field of view
DOF = depth of field Unit = mm

N3C-R (Ring Light Cap)

In most macro observation, a ring light may help to reveal more details by generating shadow-less illumination. Working seamlessly with the Dino-Lite Edge series, the N3C-R front cap is a unique and the simplest solution designed to provide ring illumination for a microscope. The 6.5 cm (2.5 inch) diameter N3C-R fully utilizes the Dino-Lite's built-in LEDs by redirecting it to form a focused, diffused, and uniform ring-light. For polarizer model such as AM4115ZT, the polarizer can still be used for suppressing the unwanted glare or reflection when using with N3C-R. Without the clutter of mounting and powering an external ring light, thus no heat and noticeable weight been added, the clip-on N3C-R economically provides alternative illumination and adds more flexibility to Dino-Lite's applications.

Note: The N3C-R has best working distance in the range of about 2 to 15 cm. It may not be suitable for short working distance operation, and is not compatible with high magnification models such as AM4515T5 or AM4515T8.

Specification

Model N3C-R Ring Light Cap

Compatible Dino-Lite Models Dino-Lite Edge LWD models (TL, ZTL)

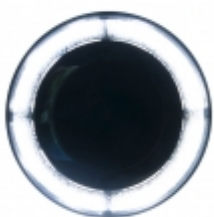
Unit Dimension 15.5 mm (H) x 65 mm (D)

Materials Polycarbonate with sputtered aluminum coated

Unit Weight approx. 8 g



Gallery



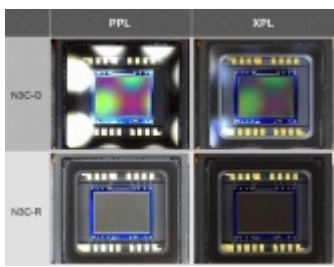
Ring light projected through N3C-R



Dino-Lite EDGE with N3C-R



RK-10 & Dino-Lite EDGE with N3C-R



Reflection or glare comparison of using N3C-R, polarizer, and both



Reflection or glare comparison of using N3C-R, polarizer, and both



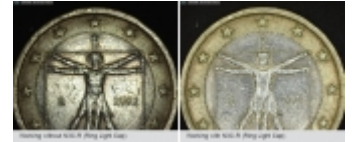
PCB 1



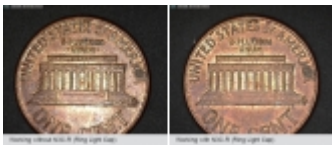
PCB 2



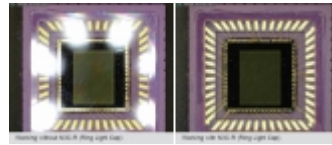
PCB 3



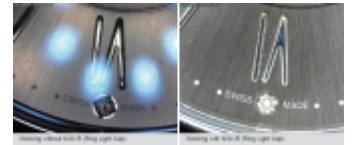
Coin 1



Coin 2



IC



Watch