

AD4113TL-MA1



The Dino-Lite Premier AD4113TL-MA1 is a long working distance model providing more distance to work with at higher magnifications, and capable of changing the front cover to better adapt to different applications.

It comes with a standard transparent front cap for normal use, a closed cap to protect the lens to protect the LED lights from dust, debris, and moisture, and an additional angle mirrored cap to look into tight spaces such as BGA inspection. It uses enhanced 1.3 megapixel sensor that offers improved low light visibility to see more detail when lighting is not perfect.

Included with the AD4113TL-MA1 is a copy of the DinoCapture 2.0 for PC's or DinoXcope software for MAC to capture either a photograph, video, or time-lapsed video within a few simple clicks. It also has measurement and measurement calibration capabilities for precision work.

Overview



Enhanced 1.3 megapixels

It observes with accurate color reproductions and retain details under low lighting with the optimum resolution for detailed live preview and captured images.



USB 2.0 Interface

Digitize the microscopy experience; allow easy recording and sharing of observations in the office or out in the field with a compatible PC or MAC.



Professional measurement tools

Use professional measurement tools that are calibratable for assured accuracy and conveniently document or share information with the bundled software.



Long working distance

Approximately 90x max magnification over 5cm providing comfortable space between objects.



Scroll Lock
Assure the knobs position with the scroll lock.



Interchangeable front caps
The AD series have a variety of interchangeable front caps that can allow you to adapt the Dino-Lite to special applications.

Included with this model are these detachable front covers
FC-L-CC2 FC-OC1 FC-L-MA1



Closed transparent front cap



Standard open front cap



Mirror angle front cap

Specification

Model : AD4113TL-MA1 Dino-Lite Premier

Interface : USB 2.0

Product Resolution : 1.3M pixels (SXGA)

Magnification Rate : 20x~90x

Sensor : Color CMOS

Frame Rate : Up to 30fps

- Save Formats:

+ Image:

DinoCapture2.0: BMP, GIF, PNG, MNG, TIF, TGA, PCX, WBMP, JP2, JPC, JPG, PGX, RAS, PNM

DinoXcope: PNG, JPEG

+ Movie:

DinoCapture2.0: WMV, FLV, SWF

DinoXcope: MOV

Microtouch : Touch sensitive trigger on the microscope for taking pictures

Lighting : 8 white LEDs

Measurement Function : Yes

Calibration Function : Yes

Operating System Supported : Windows 10, 8, 7, Vista, XP

MAC OS 10.4 or later

Unit Weight : 105g

Unit Dimension : 10.5cm (H) x 3.2cm (D)

Package Dimensions : 16cm(L) x 16cm(W) x 6cm(H)

Gallery

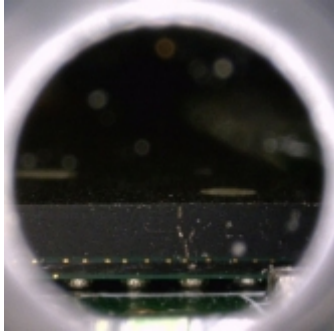


Image of BGA taken
with FC-L-MA1 front
cap attached