

AM5212T



The AM5212T is the latest addition to the Edge series microscopes with AV/TV output interface. Combined with totally revamped optics and 960H sensor technology, it is the latest upgrade over existing Premier series TV-interface models such as the AM4112 and AM412. Also, like all standard magnification models on the Edge series, this microscope incorporates a 20X to 220X magnifying range.

As member of the Dino-Lite Edge series microscopes, there are interchangeable front caps available to suit different purposes. The current available options are close cap, open cap, diffuser cap, extended cap, long cap, and sidelight cap.

The MicroTouch button on the AM5212T is configured to conveniently control on/off the LEDs with a simple tap of a finger. The scroll lock on the magnification dial is able to secure the dial and fix the focus and magnification, which can be helpful to prevent unintentional rotations of the dial in some applications.

The AM5212T does not require a computer or bundled software to operate, but instead works by connecting it to a regular TV using the composite video cable. This microscope is available in either NTSC or PAL video standards depending on your region of residence. Thanks to the simplicity of system configuration and minimized maintenance requirement, the largely reduced overall system and operating cost together with the high image quality makes it ideal for use beyond industrial applications.

## Overview



### High quality optics

This Dino-Lite Edge series microscope maximizes observed details with state-of-the-art lens design and super sharp resolving power.



### Convenient flexible magnification

The Dino-Lite is capable of variable magnification with a range of 20~220x depending of working distance by simply zooming in or out with just a rotating dial.



#### TV connectivity

Connect the microscope to a TV monitor via the composite video cable for either NTSC or PAL video standards in 960 x 480 high resolutions.



#### MicroTouch button

Switch on/off the LEDs quickly and conveniently with the MicroTouch button. This small, round, touch-sensitive button is configured to allow you take control of the lighting during observation with a simple tap of a finger.



#### Adaptable cap design

This model features a detachable and interchangeable front cap that extends its range of use, as different caps are available for various applications. Removing the front cap provides greater working distance and access to the full magnification range.

### Interchangeable Front Caps



#### N3C-C / Close Cap

This cap protects the lens and LED lights from contamination of dust, debris, or moisture.



#### N3C-D / Diffuser Cap

This cap diffuses the LED light.



#### N3C-D2 / Opal Diffuser Cap

This cap diffuses the LED light.



#### N3C-E / Extended Open Cap

Dino-Lite Edge (stand type) will focus at approximately 200x when the cap touches surface.



#### N3C-L / Long Cap

This cap is useful to adjust the working focus of Dino-Lite Edge at lower magnification.



#### N3C-O / Open Cap

This is the standard cap for normal usage.



#### N3C-S / Sidelight Cap

This cap creates images with more depth and texture.

#### Information about working distance and field of view

M	WD	FOV (x)
20	40.5	18
50	11	8.5
100	5	4.5
150	7	3
200	-0.6	2.2

M = magnification rate      WD = working distance (without front cap)      FOV = field of view      DOF = depth of field      Unit = mm

#### Specification

Model : AM5212T Dino-Lite Edge

Interface : Composite video

Product Resolution : 960H

Magnification Rate : 20x~220x

Microtouch : Tap to turn On/Off LEDs

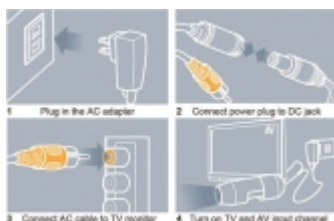
Lighting : 8 white LEDs

Unit Weight : 100g

Unit Dimension : 10.5cm (H) x 3.2cm (D)

Package Dimensions : 16cm(L) x 16cm(W) x 6cm(H)

#### Gallery



#### System Configuration

