

# PosiTector® **RTRH** *Replica Tape Reader*

# RTR



Measures and  
records surface  
profile parameters  
using replica tape



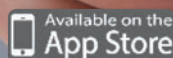
For use with Testex™ Press-O-Film™  
Replica Tape

**DeFelsko**®  
The Measure of Quality

PosiTector®  
SmartLink  
Compatible

 **Bluetooth**®

  
WiFi

 Available on the  
App Store



# PosiTector® **RTR**H

## All Gages Feature...

### Simple

- Measures peak height ( $H_L$ )
- Automatically subtracts the 50.8  $\mu\text{m}$  (2 mil) incompressible film from all readings
- Minimizes inspector workload by reducing the number of replicas needed to ensure accuracy (see green inset below)
- Enhanced one-handed menu navigation
- RESET feature instantly restores factory settings

### Durable

- Solvent, acid, oil, water and dust resistant—weatherproof
- Rugged indoor/outdoor instrument—ideal for field or shop use
- Shock-absorbing, protective rubber holster with belt clip
- Two year warranty on gage body AND probe

### Accurate

- Produces a more accurate peak-to-valley height measurement ( $H_L$ ) (see green inset below)
- Certificate of Calibration showing traceability to PTB included
- Conforms to national and international standards including ISO and ASTM

### Versatile

- PosiTector body accepts all PosiTector RTR, 6000, 200, SPG, DPM, SST, SHD and UTG probes easily converting from a surface profile gage to a coating thickness gage, dew point meter, soluble salt tester, Shore hardness durometer or ultrasonic wall thickness gage
- Selectable display languages
- High contrast LCD with backlit display
- Flip Display enables right-side-up viewing
- Uses alkaline or rechargeable batteries (built-in charger)

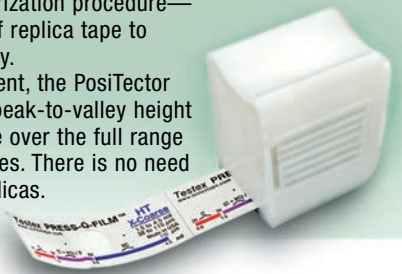
### Powerful

- Continually displays/updates average, standard deviation, min/max height and number of readings while measuring
- Screen Capture—save screen images for record keeping and review
- Sealed USB port for fast, simple connection to a PC and to supply continuous power. USB cable included.
- PosiSoft USB Drive—stored readings and graphs can be accessed using universal PC/Mac web browsers or file explorers. No software required.
- Every stored measurement is date and time stamped
- Includes PosiSoft suite of software for viewing and reporting data

### Linearized Peak Height Measurement ( $H_L$ )

Coarse and X-Coarse replica tape share a 38–64  $\mu\text{m}$  (1.5–2.5 mil) “overlap” region. Measurements with analog micrometers require a complicated linearization procedure—averaging the two grades of replica tape to achieve reasonable accuracy.

With a single measurement, the PosiTector RTR produces a linearized peak-to-valley height measurement ( $H_L$ ), accurate over the full range of Coarse and X-Coarse tapes. There is no need to average two or more replicas.



## Select Standard or Advanced Features

### Standard Models

**Includes ALL features as shown on left plus...**

- Storage of 250 readings per probe—stored readings can be viewed or downloaded

### Advanced Models

**Includes ALL features as shown on left plus...**

- Storage of 100,000 readings from multiple probes in up to 1,000 batches
- Live graphing of measurement data
- WiFi technology wirelessly synchronizes with PosiSoft.net and downloads software updates
- **Bluetooth® 4.0 Technology** for data transfer to a mobile device running the PosiTector App or optional portable printer. **BLE API** available for integration into third-party software.
- Onscreen Batch Annotation—add notes, change batch names and more with built-in QWERTY keyboard

For a complete comparison of the Standard and Advanced features visit [www.defelsko.com/rtr](http://www.defelsko.com/rtr)

### PosiTector SmartLink™ Compatible

- Wirelessly connect PosiTector RTR H probes to your smart device
- Turns your cell phone or tablet into a virtual PosiTector gage
- Includes free mobile app



### Ordering Guide

Standard Model	RTRH1
Advanced Model	RTRH3
Probe Only	PRBRTRH

For information on measuring common 2D/3D profile parameters such as Ra, Rz, Sq, Spd and more with the **NEW PosiTector RTR 3D** visit [www.defelsko.com/RTR3D](http://www.defelsko.com/RTR3D)

### Peak Height ( $H_L$ ) Specifications

Range	20–115 $\mu\text{m}$ (0.8–4.5 mils)
Accuracy	$\pm 5 \mu\text{m}$ ( $\pm 0.2$ mils)
Resolution	1 $\mu\text{m}$ (0.1 mil)

### ALL GAGES COME COMPLETE

with stainless steel burnishing tool, 5 cleaning cards, check shim(s), surface cleaning putty, protective rubber holster with belt clip, wrist strap, 3 AAA alkaline batteries, instructions, nylon carrying case with shoulder strap, protective lens shield, Long Form Certificate of Calibration traceable to PTB, USB cable, PosiSoft Software, two (2) year warranty on body and probe.



Conforms to ASTM D4417, ISO 8503-5, NACE RP287, SSPC-PA 17, SSPC-SP5, SP6, SP10, SP11-87T and others.

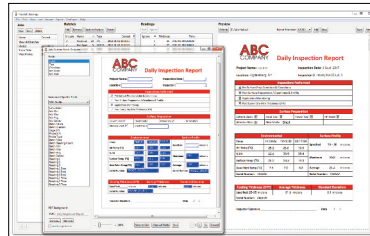
# PosiSoft® Suite of Software

Four FREE and unique ways to view and report your PosiTector and PosiTest data

## PosiSoft Desktop — PC/Mac

Powerful desktop software for downloading, viewing, printing and archiving measurement data. No internet connection required.

- Import readings directly from the gage via USB or from legacy PosiSoft desktop versions
- Synchronize measurement data including readings, notes and pictures to and from PosiSoft.net
- Import/Export Templates and Jobs to share with other users
- Import PDF forms and overlay **Custom Fields** for automatic population of inspection and measurement data
- Report preview automatically refreshes as changes are made



### Prompted Batch Mode

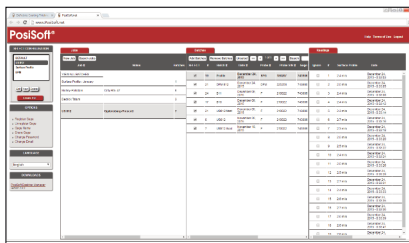
Create pre-defined batches with onscreen text and image prompts for each reading and upload to PosiTector 6000 gages (*Advanced models only*).

- Ideal for ensuring a consistent measurement pattern for repetitive jobs or when specific measurement locations are required
- Create and store multiple templates for different jobs

## PosiSoft.net — Web-based

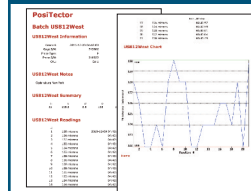
A web-based application offering secure centralized management of readings. Access your data from any web-connected device.

- Synchronize data when connected via USB or WiFi
- Synchronize measurement data including readings, notes and pictures with PosiSoft Desktop and PosiTector App
- Securely store measurement data in the cloud and share with authorized users via a secure login



Jobs Batches Readings

## PosiSoft USB Drive — Gage Based



A simple gage interface to retrieve data in a manner similar to USB flash drives, cameras, or digital audio players. No software to install or internet connection required.

- View and print readings and graphs using universal PC/Mac web browsers and file explorers
- Measurement data can be printed quickly from a formatted HTML report or exported in .CSV format for further analysis in spreadsheets
- Simple file management - Copy and paste measurement data from the PosiTector to a local folder on your computer, network folder or cloud drive
- Access stored screen captures (snapshots) of the PosiTector display



PosiTector and PosiTest AT-A instruments can integrate with third-party software, drones, ROVs, PLCs, and robotic devices using several industry-standard communication protocols.

## PosiTector App — Mobile

Mobile app connects PosiTector Advanced instruments, the PosiTector SmartLink and the PosiTest AT-A to your *iOS* or *Android* smart device.

- Auto pairing Bluetooth BLE connection
- Automatically generate user-formatted reports and share via email, text, cloud storage services like Dropbox, and more
- Export readings to PosiSoft Desktop or synchronize readings to and from PosiSoft.net for further reporting and archival options

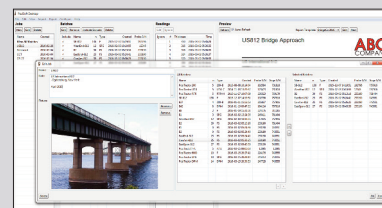
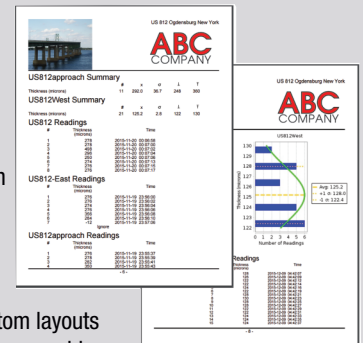


## PosiSoft Custom PDF Report Generator

Easily create reports from your measurement data in seconds.

featured on  
PosiSoft Desktop  
PosiSoft.net  
PosiTector App

- Include inspection information such as on-site pictures, screen captures, notes and more to communicate important details
- Create and save multiple custom layouts as templates – insert cover pages, add logos/images, and select font and point size
- Select the information to include for each product type – charts, histograms, readings, time stamps and more
- Compile multi-batch reports from one or more probes and instrument types
- Export readings as comma separated value (.CSV) files which can easily be imported into Excel and other supporting applications



**Jobs** feature consolidates batches into groups to keep measurement data organized and to quickly create multi-batch reports (not available on PosiTector App)

## PosiTector Developer Resources

including Bluetooth 4.0, WiFi, USB Keyboard, and USB Serial

**DeFelsko®**  
The Measure of Quality

DeFelsko Corporation • 800 Proctor Ave. • Ogdensburg, New York 13669-2205 USA  
Toll Free 1-800-448-3835 • Tel: +1-315-393-4450 • Fax: +1-315-393-8471  
techsale@defelsko.com • www.defelsko.com

**Made in U.S.A.**