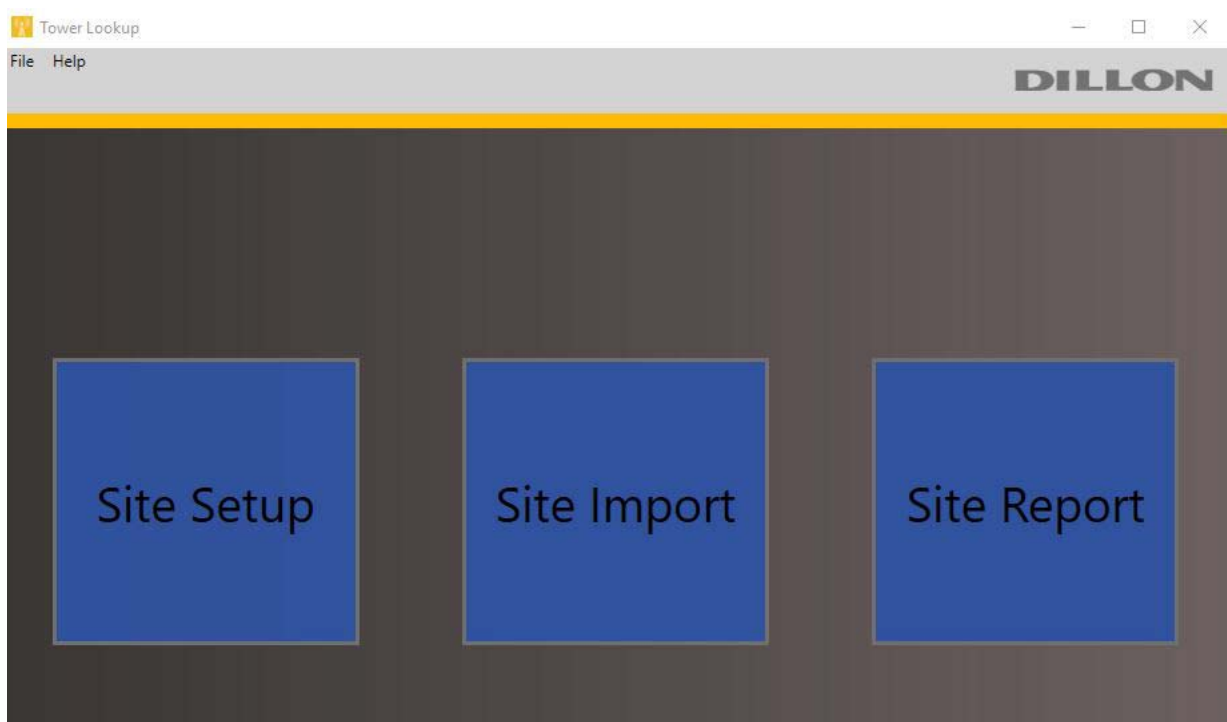


Tower Lookup PC Application



Quick User Guide

Dillon is part of Avery Weigh-Tronix. Avery Weigh-Tronix is a trademark of the Illinois Tool Works group of companies whose ultimate parent company is Illinois Tool Works Inc ("Illinois Tool Works"). Copyright © 2020 Illinois Tool Works. All rights reserved.

No part of this publication may be reproduced by making a facsimile copy, by the making of a copy in three dimensions of a two-dimensional work and the making of a copy in two dimensions of a three-dimensional work, stored in any medium by electronic means, or transmitted in any form or by any means, including electronic, mechanical, broadcasting, recording or otherwise without the prior written consent of the copyright owner, under license, or as permitted by law.

This publication was correct at the time of going to print, however Avery Weigh-Tronix reserves the right to alter without notice the specification, design, price or conditions of supply of any product or service at any time.

1 Introduction

The Tower Lookup PC Software is a program that will interface with the Quick Check-T for importing target tensions into the Quick Check-T and exporting into tower site forms for reporting.

1.1 Connections

To connect the Quick Check-T to your PC, you will need the Lemo to USB Cable Kit (part number AWT05-509542).

1. Connect the USB to serial converter cable to your computer.
2. Connect the other end to the DB9 connector on the serial cable.
3. Connect the Lemo connector to the back of the Quick Check-T.



Figure 1.1 Connections

If using a Communicator, connect the Lemo connector to Com 1 on the Communicator instead of the Quick Check-T.

4. Power on the Quick Check-T.

1.2 Configuring Tower Lookup

1. With Tower Lookup installed on your computer, open Tower Lookup and click on **File**.
2. Click on **Tools** to open the **Configuration** window.
3. Choose the correct com port from the dropdown menu. Leave the other communication settings under **Serial Configuration** as they are.

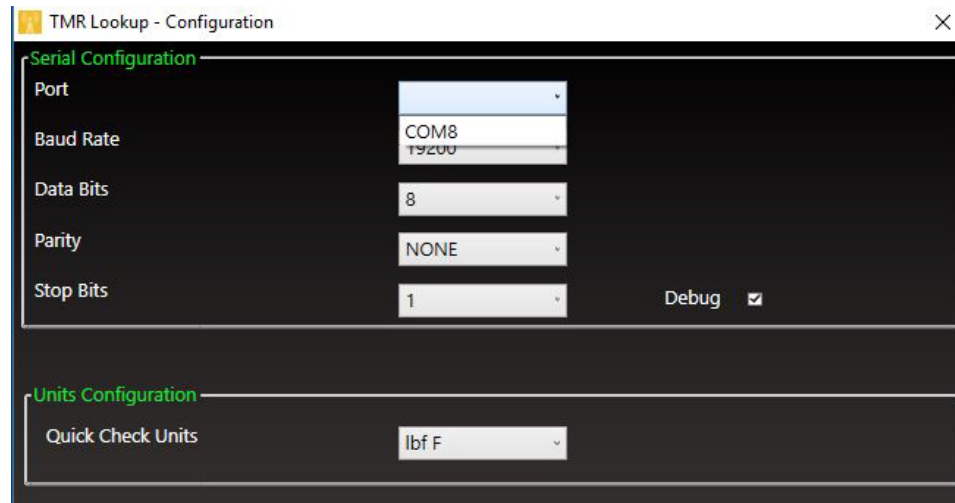


Figure 1.2 Com Port Selection - In this example, only one port is available.

4. In the **Units of Configuration** section, choose from the following available units:
 - Newtons/Celcius
 - Pounds/Fahrenheit
 - Kilograms/Celcius

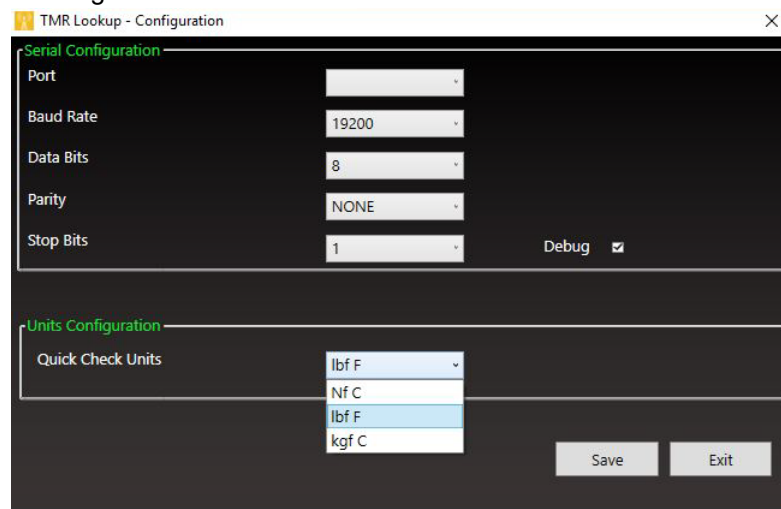


Figure 1.3 Units Selection



The units selected in the dropdown list should match the units in the Target Tension spreadsheet being imported.

5. Click **Save**, followed by **OK**.
6. Click **Exit** to close the **Configuration** window.

1.3 Importing Target Tensions

1. From the **Tower Lookup Main Screen**, select **Site Import**.

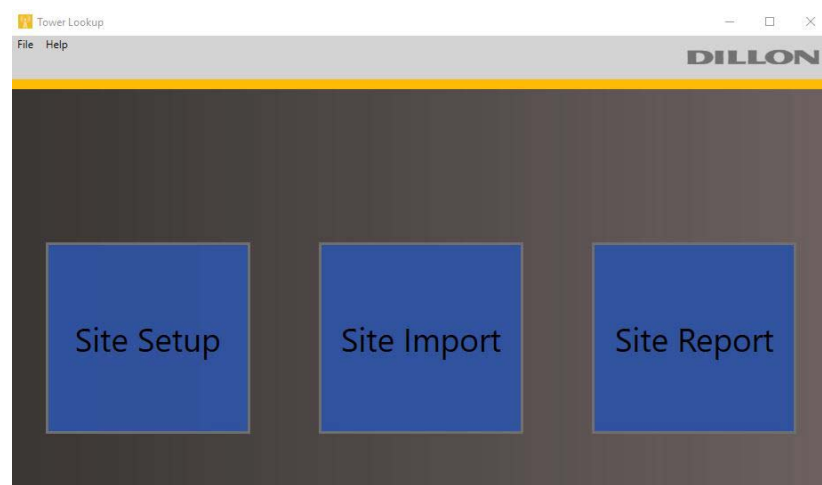


Figure 1.4 Tower Lookup Main Screen

2. Select the appropriate template from the **Open** dropdown menu.

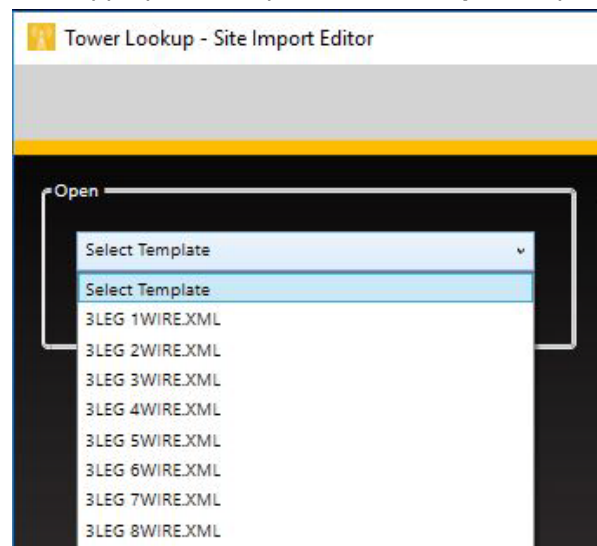


Figure 1.5 Open Dropdown Menu

- click **Browse for file** and select the **Target Tension Spreadsheet** you would like to import.

The target tension data will be imported and displayed in the **Guy Tension Data** window.

Figure 1.6 Guy Tension Data

- From the **Tower Lookup Site Import** screen, click on **Send Guy Tension Data**.
- On the Quick Check-T, press the **Right Arrow**, and then press the **Tower** softkey.

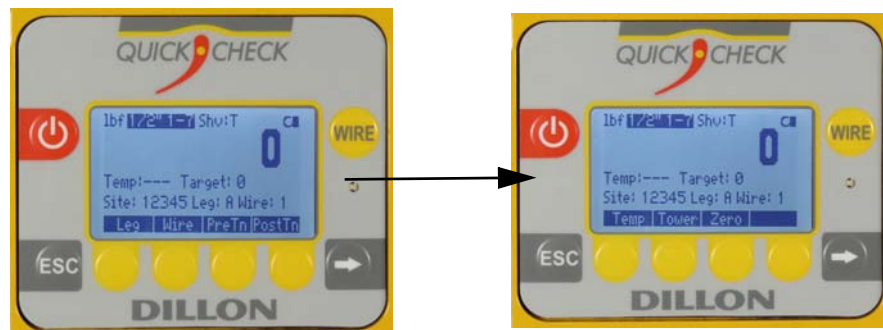


Figure 1.7 Step 5

6. Press **Load** on the Quick Check-T.

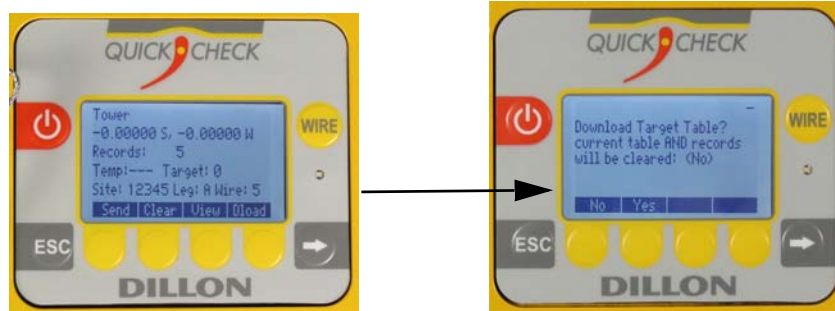


Figure 1.8 Steps 6 and 7

7. When prompted to clear the table, press **Yes**. This will delete previous site data stored in the Quick Check-T

The Tower Lookup program indicates that the send was successful, and the site information will be displayed on the Quick Check-T.



Figure 1.9 Site Information Displayed

8. On the Quick Check-T, press **Escape** multiple times to return to the main screen.
9. Click **OK** in **Tower Lookup** and exit the program.

The data is loaded in the Quick Check-T and the Quick Check-T is ready for the plumb and tension procedure for this site.

1.4 Import Data into Tower Lookup

After completing the plumb and tension procedure at the site, you can import the data stored in the Quick Check-T into Tower Lookup.

1. Connect the Quick Check-T to your computer using the same procedure described in [section 1.1](#)
2. From the **Tower Lookup Main Screen**, select **Site Report**

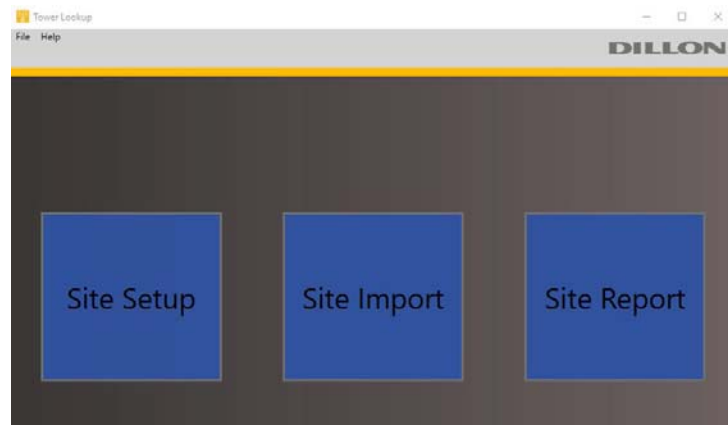


Figure 1.10 .Tower Lookup Main Screen

The Site Report screen opens.

Figure 1.11 Site Report Screen

3. Click on **Import Data**.

The program prompts you to press **Send** on the Quick Check-T.

4. On the Quick Check-T, press the **Arrow**, and then press the **Tower** softkey.

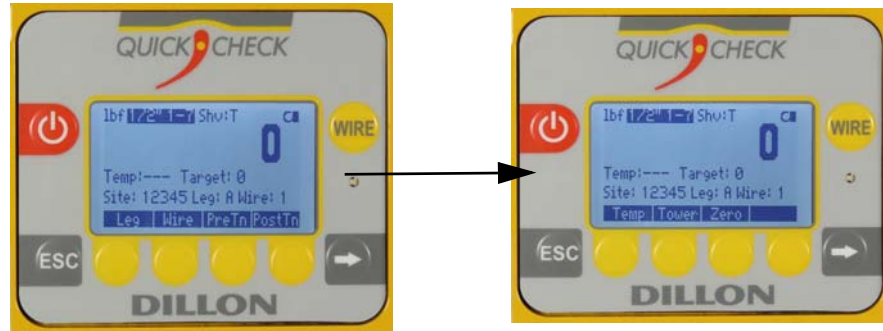


Figure 1.12 Step 4

5. Press **Send** on the Quick Check-T. Then press **Yes**.

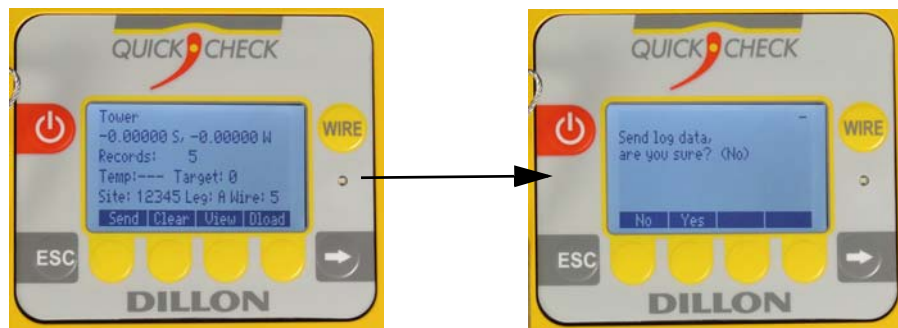


Figure 1.13 Step 5

6. **Tower Lookup** displays a popup indicating that the data was received.
7. Click **OK** to clear the popup window.

The imported site data appears on the left of the **Site Report** screen.

8. Click on the **Site**.

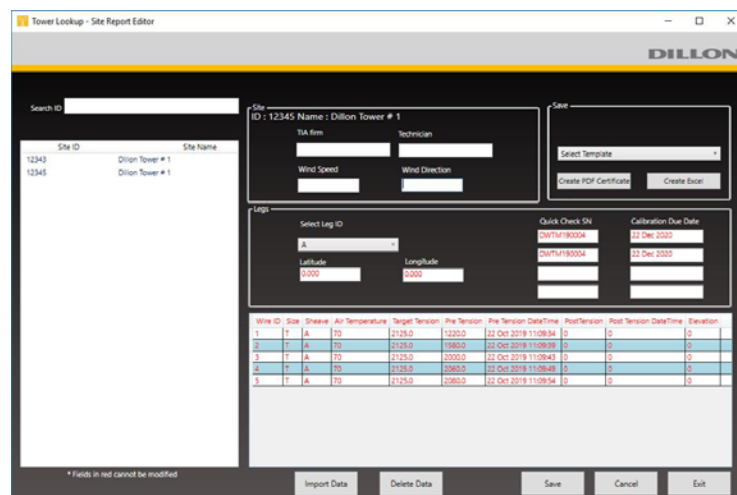


Figure 1.14 Imported Site Report

The tension data is now included in the **Leg** fields.

9. Fill out the TIA firm, Technician, Wind Speed, and Wind Direction fields in the form, and then press **Save**.

The screenshot shows the 'Tower Lookup - Site Report Editor' window. The interface includes a search bar, a list of sites, and a detailed form for editing site information. The 'Site' section is filled out with the following data:

- Site ID: 12345, Name: Dillon Tower #1
- TIA firm: Dillon
- Technician: John Smith
- Wind Speed: 10
- Wind Direction: NE

The 'Leads' section contains a table with the following data:

Wire ID	Size	Shave	Air Temperature	Target Tension	Pre Tension	Pre Tension DateTime	Post Tension	Post Tension DateTime	Elevation
1	T	A	70	2125.0	1220.0	22 Oct 2019 11:09:34	0	0	0
2	T	A	70	2175.0	1580.0	22 Oct 2019 11:09:39	0	0	0
3	T	A	70	2175.0	2000.0	22 Oct 2019 11:09:43	0	0	0
4	T	A	70	2125.0	2080.0	22 Oct 2019 11:09:48	0	0	0
5	T	A	70	2125.0	2080.0	22 Oct 2019 11:09:54	0	0	0

At the bottom of the window, there are buttons for 'Import Data', 'Delete Data', 'Save', 'Cancel', and 'Exit'. A note at the bottom left states: '* Fields in red cannot be modified'.

Figure 1.15 Site Report with Site Information Complete

Site Updated Successfully is displayed as a popup.

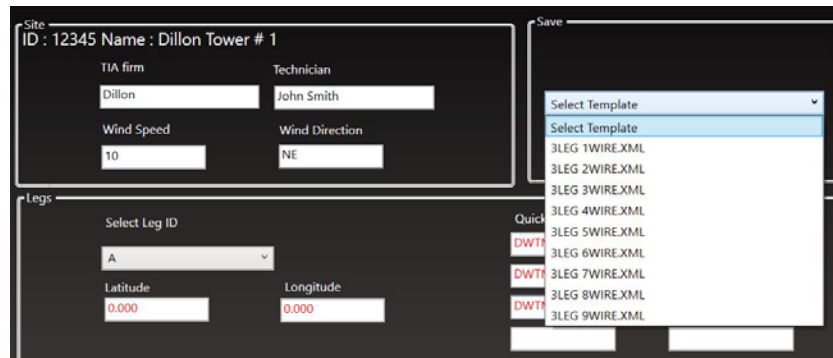
10. Click **OK** to clear the popup window.

1.5 Export Data

Once the data has been uploaded into Tower Lookup, you can create a spreadsheet of the data or generate a PDF certificate.

1.5.1 Export as Spreadsheet

1. With the correct site selected, choose a template from the dropdown menu in the **Save** window



The screenshot shows the 'Save' window in Tower Lookup. The window has a dark background with white text. At the top, it says 'Site ID : 12345 Name : Dillon Tower # 1'. Below this, there are two columns of input fields: 'TIA firm' (Dillon), 'Technician' (John Smith), 'Wind Speed' (10), and 'Wind Direction' (NE). To the right of these fields is a 'Select Template' dropdown menu. The dropdown menu is open, showing a list of templates: '3LEG 1WIRE.XML', '3LEG 2WIRE.XML', '3LEG 3WIRE.XML', '3LEG 4WIRE.XML', '3LEG 5WIRE.XML', '3LEG 6WIRE.XML', '3LEG 7WIRE.XML', '3LEG 8WIRE.XML', and '3LEG 9WIRE.XML'. Below the dropdown menu, there are two buttons: 'Quick' and 'Save'.

Figure 1.16 Choose Template



The template you choose must match the tower architecture for the site.

2. Click **Create Excel**.
3. Select the spreadsheet you want to export the data into.
4. Click **Open**.
5. Choose the path where you want to save the file to and click **OK**.

The spreadsheet is created and a popup appears in Tower Lookup to confirm.

6. Click **OK** to clear the popup.

1.5.2 Create PDF Certificate

1. With the correct site selected, click **Create PDF Certificate**.
2. Choose the path where you want to save the file and click **OK**.

The certificate is created and a popup appears in Tower Lookup to confirm.

Site		Save	
ID : 12345 Name : Dillon Tower # 1		Select Template	
TIA firm	Technician	Create PDF Certificate Create Excel	
Dillon	John Smith		
Wind Speed	Wind Direction		
10	NE		

Legs	
Sn	Quick Check SN Calibration Due Date
A	DWTM190004 22 Dec 2020
L	DWTM190004 22 Dec 2020
0	DWTM190004 22 Dec 2020

PDF file has been created.
OK

Figure 1.17 PDF Confirmation

3. Click **OK** to clear the popup.

AUTHORIZED DISTRIBUTORS

Ask the experts. Dillon distributors offer complete service capabilities from application assistance to sales and product support. Their experienced representatives are the most knowledgeable experts that you will find in the force measurement industry. We recommend that you consult these capable specialists for all of your measuring needs.

DILLON

**a division of
Avery Weigh-Tronix**
1000 Armstrong Drive
Fairmont, Minnesota U.S.A.

Toll-Free: (800) 368-2031
Phone: (507) 238-4461
Fax: (507) 238-8258
www.dillon-force.com